



# Washer extractor

## W555H

### Features and benefits

- **Compass Pro® microprocessor offers:**
  - Large display and one control knob for easy program selection
  - Language selection
  - Quick selection and option buttons for the most frequently used wash programs and options
  - Wash program packages optimized on *Economy, Performance and Time*
- **AS – Automatic Savings:**
  - The machine weighs the linen and adjusts the amount of water and energy according to the load. This leads to considerable savings in case the machine is not fully loaded
- Extremely low water and energy consumption – see table below
- Four compartment detergent box for manual dosing of powder or liquid detergent
- High extraction force for efficient dewatering
- Door with gasket and strong hinges built for heavy duty operation
- Stainless and galvanized steel in all vital parts for high degree of rust protection
- **PowerBalance™:**
  - Maximises the extraction force
  - Less stress on the machine
  - Reduces vibrations



Images shown are a representation of the product only and variations may occur.

### Main options

- Automatic liquid detergent supply (optional I/O board)
- Connection to booking- /payment- system or coin meter
- Drain pump
- Stacking kit to install tumble dryer T5130 on top to save space

Main specifications				W555H
Max. capacity		kg/lb		6/13
Drum, volume		litre		53
diameter		ø mm		452
Extraction		rpm		1450
G-factor				530
Heating alternatives, 230/400V	electricity	kW		4.7
	non-heated			x
<b>Consumption data "Normal 60°C" * (6G01)</b>				
Total time		min		50
Water consumption (cold+hot)		litre		36+9
Energy consumption (motor/heating)		kWh		0.15/0.2

\* Water temperature 15°C cold water and 65°C hot water.



### Electrical connections

Heating alternative	Main voltage	Hz	Heating power kW	Total power kW	Recommended fuse A
Electric heated	220-230V 1~	50/60	2.1	2.5	16
	220-230V 1~	50/60	4.2	4.7	25
	240V 1~	50/60	2.2	2.6	16
	240V 1~	50/60	4.4	4.8	20
	220-230V 3~	50/60	4.2	4.7	20
	240V 3~	50/60	4.4	4.8	20
	380-400V 3~	50/60	3.2	3.6	10
	415V 3~	50/60	3.6	4.0	10
	440V 3~	60	4.0	4.5	16
	480V 3~	60	4.4	4.8	16
	380-400V 3N~	50/60	4.2	4.7	10
	415V 3N~	50/60	4.4	4.8	10
Non heated	220-240V 1~	50/60	-	0.9	10

### Water connections

	DN	W555H
Water valves	20	
Water pressure	kPa	200-500
Capacity at 300 kPa	l/min	17
Drain valve	ø mm	50
Draining capacity	l/min	160
Liquid detergent supplies		4

### Floor requirements

Frequency of the dynamic force	Hz	24.2
Floor load at max extraction	kN	1.02 ± 0.3

### Sound levels

Sound power level (IEC 60704-2-4)		
wash	dB(A)	59
extraction	dB(A)	72

### Heat emission

% of installed power, max	5
---------------------------	---

### Shipping data

	net, kg	99
	crated, kg	109
	boxed, kg	147
Shipping volume	crated, m <sup>3</sup>	0.47

### Accessories

Stainless steel fluff collector	x
Stacking kit with tumble dryer	x
Steel base	x

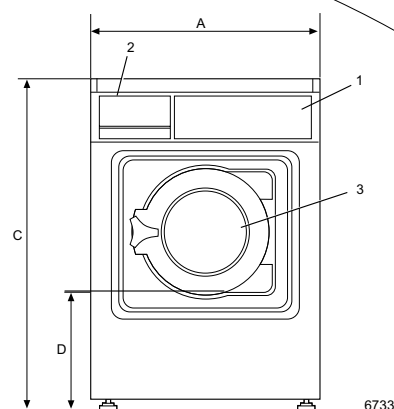
### Dimensions in mm

<b>A</b> Width	595
<b>B</b> Depth	680
<b>C</b> Height	850
<b>D</b>	305
<b>E</b>	660
<b>F</b>	80
<b>G</b>	195
<b>H</b>	60
<b>I</b>	90
<b>K</b>	80
<b>L</b>	650 ± 50

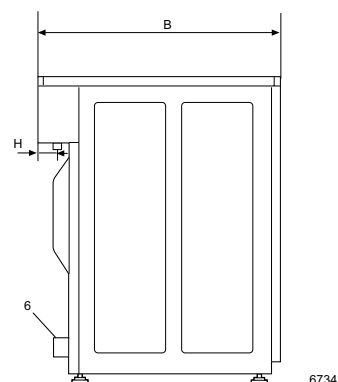
<b>1</b> Control panel	<b>5</b> Hot water
<b>2</b> Soap box	<b>6</b> Drain, valve
<b>3</b> Door opening ø 255 mm	<b>7</b> Drain, pump
<b>4</b> Cold water	<b>8</b> Electrical connection

Front and side panels in light grey and blue (RAL 260 70 05, 250 60 30)

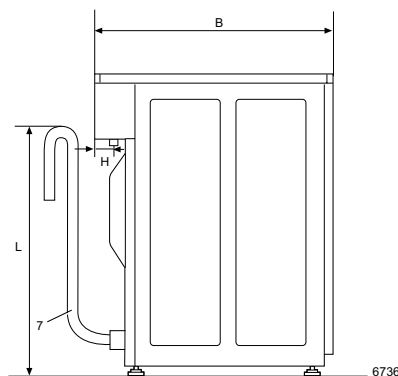
\* Other voltages available, see installation manual



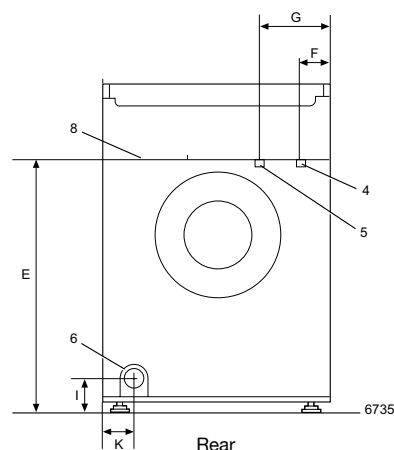
Front



Side view



Side view, pump



Rear